



| FORD **PERFORMANCE**

PERFORMANCE WHEEL KITS



F-150

20" Six Spoke
M-1007K-P20XB
M-1012-FA (lug nuts)



MSRP: \$1,567

RANGER

17" Ranger Raptor
M-1007K-RGR17B5OR
factory lug nuts required



MSRP: \$1,156

18" Machined Face
KB3Z-1K007-C
lug nuts included



MSRP: \$999

SUPER DUTY

20" PREMIUM
M-1007K-SU2008EB
factory lug nuts required



MSRP: \$1,150

MUSTANG

19" HP Performance
M-1007K-DC19MB
M-1012-M (lug nuts)



MSRP: \$1,029

19" GT Performance
M-1007K-M19XB
M-1012-M (lug nuts)



MSRP: \$1,472

WANT IT READY TO ROLL?

Mount & Balance available with Performance Preferred tires.

Vehicle	Wheels	Tires	Total MSRP
F-150	M-1007K-P20XB	275/55R20 - Terra Grappler G2 - 215220	\$2,509.60
F-150*	M-1007K-P20XB	285/60R20 - Ridge Grappler - 217400	\$3,300.24
Ranger	M-1007K-RGR17B5OR	265/65R17 - Terra Grappler G2 - 215260	\$1,940.20
Ranger	KB3Z-1K007-C	265/65R18 - Terra Grappler G2 - 215520	\$1,858.00
Super Duty	M-1007K-SU2008EB	275/65R20 - Terra Grappler G2 - 215110	\$2,220.20
Mustang	M-1007K-DC19MB	F255/40R19, R275/40R19 - Nitto NT555 G2 - 211080, 211090	\$2,658.80
Mustang	M-1007K-M19XB	F255/40R19, R275/40R19 - Nitto NT555 G2 - 211080, 211090	\$2,449.80

*For use on F-150 equipped with Fox Off-Road Suspension Leveling Kit (P/N: M-18000-FISA, not included in MSRP)

All wheel sets include center caps & TPMS Sensors.

All Kits Include Center caps and TPMS Sensors

Ford F-150 20" Wheel Package:
Dealer Cost \$2,117.85

Ford Ranger 17" Gray Wheel Package:
Dealer Cost \$1,651.20

Ford Ranger 18" Black Wheel Package:
Dealer Cost \$1,558.30

Super Duty 20" Wheel Package:
Dealer Cost \$1,932.70

Mustang 19" GT Dealer Cost: \$2,081.80

Mustang 19" HP Dealer Cost: \$2,485.80

2019-2020 Ranger Raptor Wheels Mounted with Nitto Terra Grappler G2 Tires

M-1007K-RGR17850R (Wheel) & 215260 (Tire)

- Premium OEM aluminum wheels with matte Dyno Gray finish and clear coated to OEM standards
- Includes Four Ranger TPMS Sensors and "FORD" Raptor/Ranger style Center Cap Kit
- 17" x 8.5" wide
- lug, 139.7 mm bolt circle, factory lugs required
- 55 mm offset
- 177.5 mm backspacing
- The Terra Grappler G2 is Nitto's next generation all-terrain light truck tire specifically designed to meet your everyday on and off-road adventures.
- 265/65r17 Terra Grappler All Terrain Tires

MSRP: \$1,940.20

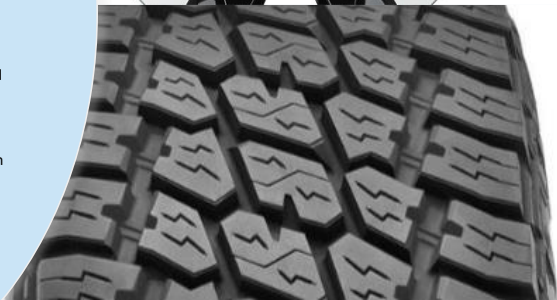


2019-2020 Ranger Black Machine-Faced Wheels
Mounted with Nitto Terra Grappler G2 Tires

KB3Z-1K007-C (Wheel) & 215520 (Tire)

- Designed and engineered to complement the new Ranger's athletic appearance.
- Tested to original equipment standards for corrosion resistance.
- Set of 4, includes lug nuts
- TPMS sensors and wheel center caps included
- 18" Black Machine Faced
- The Terra Grappler G2 is Nitto's next generation all-terrain light truck tire specifically designed to meet your everyday on and off-road adventures.
- 265/65R20 Terra Grappler All Terrain Tires

MSRP: \$1,858.00





2005-2020 Super Duty Premium Black Performance
Wheels with Nitto Terra Grappler G2 Tires

M-1007K-SU2008EB (Wheel) & 215110 (Tire)

- Fits Super Duty F-250 and F-350 Single Rear Wheel Models
- 20" x 8" Painted High Gloss Black Premium Aluminum Wheels
- Includes two open and two closed "FORD" center caps
- Includes four TPMS sensors and activation tool kit
- 8-lug 170 mm bolt circle, factory lugs required
- 156.5 mm backspacing with 40 mm Offset
- The Terra Grappler G2 is Nitto's next generation all-terrain light truck tire specifically designed to meet your everyday on and off-road adventures.
- 275/65R20 Terra Grappler All Terrain Tires

MSRP: \$2,220.20





2015-2020 Mustang HP Performance Wheels
Mounted with Nitto NT555 High Performance Tires

M-1007K-DC19MB (Wheel) & 211080/211090 (Tire)

- Clears Performance Pack 6-piston brakes
- Matte Black paint finish, clear-coated to OEM standards
- Includes two 19" x 9.5" front wheels and two 19" x 10" rear wheels
- Includes Ford Performance Center Caps and TPMS sensors and activation tool kit
- 5-lug 114mm (4.5") bolt circle (M-1012-M: lug nut set)
- The NT555 G2 is the next generation ultra high-performance tire designed with the performance driver in mind.
- (Front: 255/40R19) (Rear: 275/40R19)
- Nitto NT555 G2 Performance Tire

MSRP: \$2,658.80





2015-2020 Mustang GT Performance Wheels Mounted with Nitto NT555 High Performance Tires

M-1007K-M19XB (Wheel) & 211080/211090 (Tire)

- Matte Black paint finish, clear-coated to OEM standards
- Includes Ford Performance Center Caps and TPMS sensors
- 5-lug 114mm (4.5") bolt circle (M-1012-M: lug nut set)
- 52.5 mm offset on 19" x 9.5" wheel and 45 mm offset on 19" x 9" wheel
- 186 mm backspacing on 19" x 9.5" wheel and 172 mm backspacing on 19" x 9" wheel
- The NT555 G2 is the next generation ultra high-performance tire designed with the performance driver in mind.
- (Front: 255/40R19) (Rear: 275/40R19)
- Nitto NT555 G2 Performance Tire

MSRP: \$2,449.80



Ford Takeoff Credits

F-150:

- 17" \$300.00
- 18" \$500.00
- 20" \$800.00

Super Duty:

- 18" \$600.00
- 20" \$1000.00

Ranger:

- 17" Silver \$200.00
- 17" Chrome \$300
- 18" \$400.00

Mustang:

- 17" \$200.00
- 18" \$400.00
- 19" \$600.00
- 20" \$800.00







